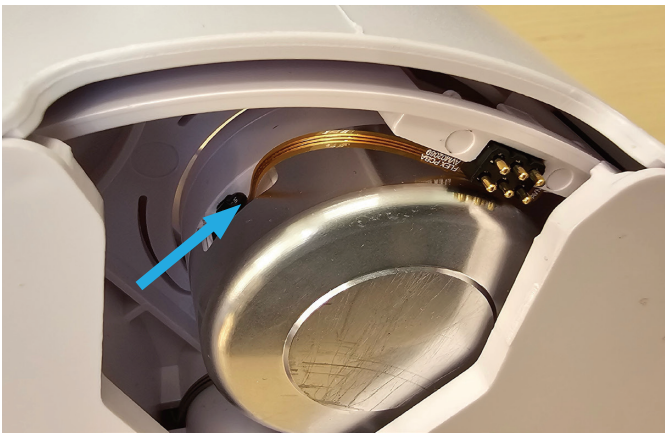


Best Practices Guide

Prior to using a RECELL GO® cartridge, aseptically remove it from the sterile tray and complete these pre-procedure checks.

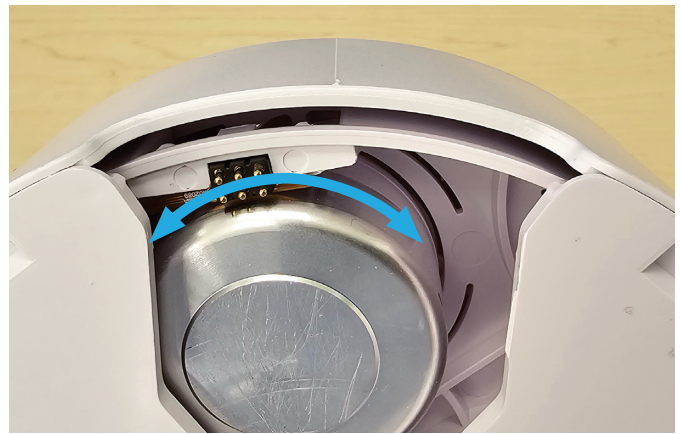
1 CHECK SENSOR

Ensure the temperature sensor is connected to Well A.*



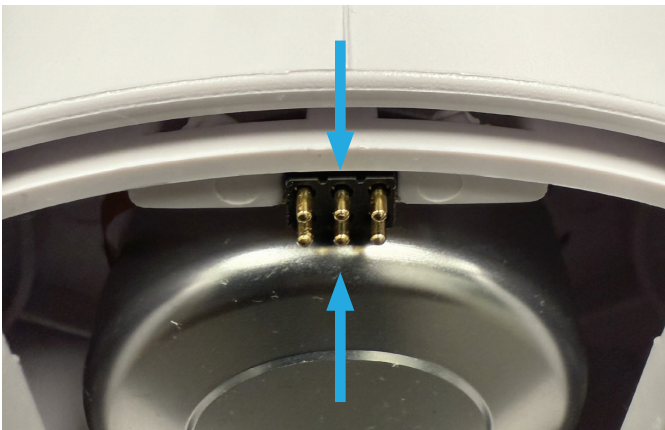
2 ROTATE WELL PLATE

Rotate the well plate in both directions by manually pushing Well A into and out of alignment. The well plate will click into different positions and should move with minimal resistance.*



3 CONFIRM ALIGNMENT

Confirm the center pogo pin alignment to the seam on the device. If misaligned, rotate Well A until you feel it click into place and the center pogo pin aligns with the seam on the cartridge.



4 INSPECT MORTAR CUP

Inspect the mortar cup to ensure it is resting in the correct position.



*If the sensor is not connected or the well plate does not rotate with minimal resistance, discard and use a new RECELL GO cartridge for set-up and notify AVITA Medical.

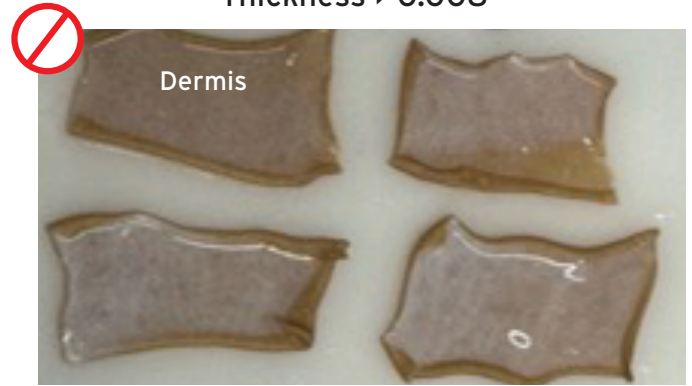
Refer to the RECELL GO Procedure Guide included with your device for complete instructions.

- 1 Harvest skin graft at 0.006 inches and ensure the skin sample is not thicker than 0.008 inches. A maximum of 4 skin samples, each no larger than 3 cm x 2 cm, can be placed in Well A.

Thickness 0.006"

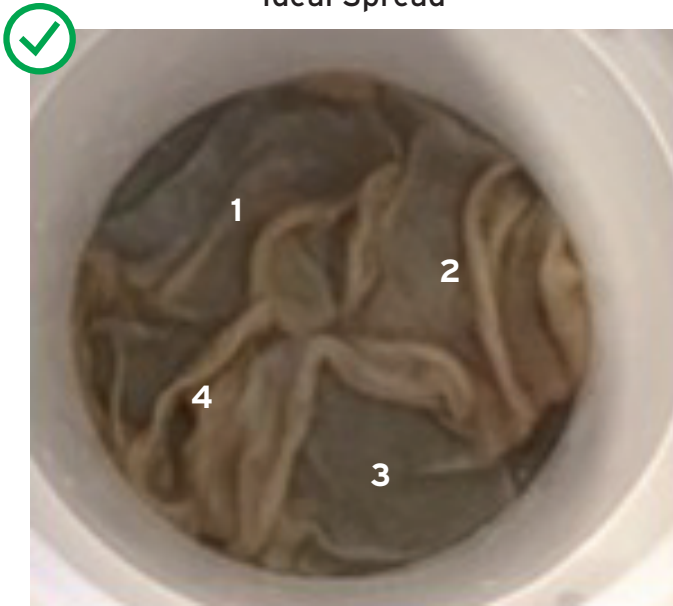


Thickness > 0.008"



- 2 Using blunt forceps, spread the skin samples along the bottom of mortar cup in Well A with as little overlap as possible. Skin samples can be placed dermal side up or down.

Ideal Spread



Insufficient Spread



RECELL GO Processing Device Error Codes

Error Code	Mode of Action	Steps to Avoid Error Code (Contact your representative if error persists)
"Txx"- Temperature, "Hxx"- Heater	Heating Mechanism	Ensure the sensor is connected and the pogo pins are aligned
"Fxx"- Force	Force Application	Ensure well plate moves with minimal resistance and skin is properly in Well A
"Wxx"- Well Motor	Well Rotation	Ensure well plate rotates with minimal resistance
"Sxx"- Spin Motor	Shaft Rotation	Ensure well plate rotates with minimal resistance



Scan for Instructions for Use & Important Safety Information

